

EXHIBIT F

**UNITED STATES DISTRICT COURT
NORTHERN DISTRICT OF CALIFORNIA**

*IN RE: MCKINSEY & CO., INC. NATIONAL
PRESCRIPTION OPIATE CONSULTANT
LITIGATION*

This Document Relates to:

ALL THIRD-PARTY PAYOR ACTIONS

Case No. 21-md-02996-CRB (SK)

**SETTLEMENT AGREEMENT
AMONG THIRD-PARTY PAYORS
AND MCKINSEY DEFENDANTS**

EXPERT REPORT OF PROFESSOR MEREDITH ROSENTHAL

TABLE OF CONTENTS

I. Executive Summary1

II. Qualifications1

III. Introduction3

IV. Proposed Method of Allocation4

 A. Approach.....4

 B. Data.....6

 C. Weighting of Covered Enrollees for Exposure Level by Year8

 D. Calculating Shares for TPPs with Incomplete Data9

 E. Calculating Shares for TPPs that Cover Only Prescription Drugs or Only Medical Care ...9

 F. Summary and Conclusions10

I. EXECUTIVE SUMMARY

1. I have been asked by counsel to the Third-Party Payor (TPP) plaintiffs in this matter to propose a method of allocation for the Settlement with McKinsey & Company, Inc. (hereafter, “McKinsey”). I understand that the Settlement is intended to compensate the TPPs for overcharges related to the alleged involvement of McKinsey in the false marketing of opioids. In this report, I describe an allocation method that relies on data reasonably available to TPPs and an algorithm that takes account of the fact that the quantum of impact on TPPs varied by year and region of the country. In particular, the proposed allocation takes as its point of departure the number of enrollees or beneficiaries covered by the TPP, with adjustments for timing (i.e., which years during the class period these enrollees were covered) and the extent to which the states in which enrollees resided were targeted by the marketing efforts of opioid manufacturers.

2. Using publicly available data and adapting methods developed in the academic literature, I propose and demonstrate the use of an allocation method that is feasible given data constraints faced by class members, that relies on methods used by economists to estimate the impact of opioid marketing, and that ensures that TPPs that were impacted more by the alleged misconduct receive a larger share of the Settlement. In addition to the primary methodology, I have also proposed an approach to determining Settlement shares for TPPs: (1) with incomplete data, and (2) that cover only prescription drugs or medical care, but not both.

3. I reserve the right to update my analyses and conclusions if additional information becomes available.

II. QUALIFICATIONS

4. My name is Meredith B. Rosenthal. I am the C. Boyden Gray Professor of Health Economics and Policy at the Harvard T.H. Chan School of Public Health and an Academic Affiliate of Greylock McKinnon Associates (“GMA”), a consulting and litigation support firm. My principal research interests concern the economics of the health care industry, including pharmaceuticals.

5. At Harvard, I have taught undergraduate-, Masters-, and Ph.D.-level health economics and health policy courses. I have conducted research on a wide variety of health economics topics, with a focus on the financing and organization of the U.S. health care system. Specific topics I have studied include the effect of payment incentives on provider behavior,¹ payment and delivery system reform,² and advertising of prescription drugs.³ I have published more than 170 peer-reviewed journal articles, essays, and book chapters.

6. Since 1996, I have worked through GMA as an expert in health economics on litigation in health care markets and the pharmaceutical industry. I have submitted written and oral testimony in litigation regarding allegations of foreclosure of generic entry, improper marketing, fraudulent use of list prices, anticompetitive contracting, and violations of the false claims act.⁴

7. I received an A.B. in International Relations from Brown University in 1990 and a Ph.D. in Health Policy (Economics Track) from Harvard University in 1998. A more complete description of my qualifications is found in my *Curriculum Vitae*, which is included as Attachment A to this report. Attachment A also includes a list of my testimony in the past four years and a list of my publications. Attachment B is a listing of the materials I relied upon in forming the opinions included in this report. GMA is currently compensated at a rate of \$950 per hour for my time. I may also receive additional compensation from GMA based on staff billings in this matter. Neither my nor GMA's compensation in this matter is contingent upon the

¹ M. Rosenthal, "Risk Sharing and the Supply of Mental Health Services," *Journal of Health Economics*, 19(6), November 2000, pp. 1047-65. M. Rosenthal, R. Frank, Z. Li, and A. Epstein, "From Concept to Practice: Early Experience with Pay-for-Performance," *Journal of the American Medical Association*, 294(14), October 2005, pp. 1788-93. M. Rosenthal, Z. Li, A. Robertson, and A. Milstein, "Impact of Financial Incentives for Prenatal Care on Birth Outcomes and Spending," *Health Services Research*, 44(5), Part 1, October 2009, pp. 1465-79.

² M. Rosenthal, "Beyond Pay for Performance: Emerging Models of Provider-Payment Reform," *New England Journal of Medicine*, 359(12), September 2008, pp. 1197-1200. M. Rosenthal, M. Friedberg, S. Singer, D. Eastman, Z. Li, and E. Schneider, "Effect of a Multipayer Patient-Centered Medical Home on Health Care Utilization and Quality: The Rhode Island Chronic Care Sustainability Initiative Pilot Program," *JAMA Internal Medicine*, September 2013, PMID: 24018613. S. Edwards, M. Abrams, M. Rosenthal, *et al.*, "Structuring Payment to Medical Homes After the Affordable Care Act," *Journal of General Internal Medicine*, 2014, PMID: 417661.

³ M. Rosenthal, *et al.*, "Promotion of Prescription Drugs to Consumers," *The New England Journal of Medicine*, 346(7), February 2002, pp. 498-505. M. Rosenthal, *et al.*, "Demand Effects of Recent Changes in Prescription Drug Promotion," *Forum for Health Economics & Policy*, 6(1), January 2003, pp. 1-26. M. Mello, M. Rosenthal, and P. Neumann, "Direct-to-Consumer Advertising and Shared Liability for Pharmaceutical Manufacturers," *Journal of the American Medical Association*, 289(4), January 2003, pp. 477-81. J. Donohue, E. Berndt, M. Rosenthal, A. Epstein, and R. Frank, "Effects of Pharmaceutical Promotion on Adherence to the Treatment Guidelines for Depression," *Medical Care*, 42(12), December 2004, pp. 1176-85.

⁴ See Attachment A for a listing of my most recent testimony.

outcome of this litigation. Should additional materials become available after the submission of this report and if asked to do so by counsel or the Court, I reserve the right to update my analysis.

III. INTRODUCTION

8. A national class-action suit was brought on behalf of TPPs alleging that McKinsey contributed to harms caused by opioid manufacturers through their consulting business. McKinsey is alleged to have assisted opioid manufacturers in their efforts to distort the benefits of opioid treatments and downplay their risks, leading to overuse of opioids and the opioid epidemic that continues to this day. TPPs were (and continue to be) affected by the alleged misconduct as they pay for pharmaceuticals for their enrollees, including opioids and other prescription drugs, and medical care, including treatments for opioid use disorder and its complications.

9. The TPP Class for which this Settlement is designated, is defined as follows⁵:

All entities that paid and/or reimbursed for (a) opioid prescription drugs manufactured, marketed, sold, or distributed by the Opioid Marketing Enterprise Members (Purdue, Johnson & Johnson, Janssen, Cephalon, Endo, and Mallinckrodt), for purposes other than resale, and/or (b) paid or incurred costs for treatment related to the misuse, addiction, and/or overdose of opioid drugs, on behalf of individual beneficiaries, insureds, and/or members, during the period June 1, 2009 to October 31, 2023. For clarity, included in the class are: (a) private contractors of Federal Health Employee Benefits plans, (b) plans for self-insured local governmental entities that have not settled claims in MDL 2804, (c) managed Medicaid plans, (d) plans operating under Medicare Part C and/or D, and (e) Taft Hartley plans.

Excluded from the class are (a) all federal and state governmental entities, (b) all tribal entities, (c) local governmental entities and school districts, (d) Pharmacy Benefit Managers (PBMs), (e) consumers, and (f) fully-insured plans. For the avoidance of doubt, entities that are otherwise members of the class are not excluded on the basis that they own an interest, including a controlling interest, in a PBM.

10. In the remainder of this report, I describe my approach to allocation, which builds on methods first used in peer-reviewed studies in economics and health policy.

⁵ Settlement Agreement Among Third Party Payors and McKinsey Defendants, *IN RE: McKinsey & CO., INC. National Prescription Opiate Consultant Litigation*, United States District Court, Northern District of California (Case No. 21-md-02996-CRB (SK) (hereafter, "Settlement").

IV. PROPOSED METHOD OF ALLOCATION

A. Approach

11. Conceptually, a fixed settlement to compensate TPPs for overcharges related to opioid marketing should be allocated in a way that reflects the relative burden borne by individual TPPs. This relative burden could theoretically be measured by statistically estimating the incremental amount of a TPP's actual spending on opioids and the health care sequelae of opioid addiction (e.g., medications for opioid use disorder, emergency department visits for overdose, etc.) that is attributable to the alleged misconduct. In the context of this Settlement allocation, the data burden for such an analysis seems disproportionate to the task. The time and resources required for TPPs to produce and tabulate detailed pharmaceutical and medical claims data for the relevant period would be substantial. Allocating the Settlement based on actual spending alone (i.e., by summing opioid-related paid claims) would also run the risk of awarding a higher share of the Settlement to TPPs with higher opioid use unrelated to marketing.

12. An alternative approach to allocation would be to focus on the size of the affected population, measured in the number of covered beneficiaries, and account for differential exposure to the challenged conduct. Enrollment data, particularly in aggregate, will be more readily available from reports and regulatory filings, and easier to access and analyze. My allocation approach for the McKinsey TPP Settlement is predicated on the idea that the impact of opioid manufacturers' marketing on TPPs is a function of the size of their covered populations over time and their exposure to the challenged marketing. Following recent work exploring the impact of opioid marketing on downstream outcomes, I measure exposure as a function of the extent to which the prescribers who cared for the TPPs' covered population were targeted by the opioid manufacturers' marketing efforts.

13. I develop my estimates by adapting a methodology used by Dennett and Gonsalves (2023), which in turn built on two earlier economics papers. Dennett and Gonsalves examine the impact of opioid marketing on long-term health outcomes associated with opioid use and addiction.⁶ They combine insights from two previous papers (described below) that developed

⁶ J.M. Dennett and G.S. Gonsalves. "Early OxyContin Marketing Linked to Long-Term Spread of Infectious Diseases Associated with Injection Drug Use," *Health Affairs*, 42(8), 2023, pp. 1081-1090.

proxies for exposure to opioid marketing and showed that early targeting of states with certain characteristics caused differences in long-term opioid impacts. The proxies these authors use derive from internal information on Purdue's marketing strategies that were made public during litigation. First, researchers found that a state's use of triplicate prescription programs, a strict set of prescription drug monitoring policies, was a deterrent to opioid marketing because physicians in states with triplicate prescribing were less likely to use opioids.⁷ Second, other researchers found that cancer mortality was a predictor of opioid marketing because these drugs were initially indicated for cancer-related pain.⁸ Dennett and Gonsalves combine both proxies to categorize states as low, middle, and high-exposure to opioid marketing. In their primary analysis and a series of robustness checks, they demonstrate that these categories are strong predictors of the long-term consequences of opioid marketing and independent of their dependent variables. Notably, in supplemental analyses Dennett and Gonsalves demonstrate that their exposure variables are associated with trends in opioid shipments (wholesale quantities).⁹

14. In this report, I employ a regression analysis that replicates the Dennett and Gonsalves approach to measuring exposure to marketing as its point of departure but focuses on opioid use rather than long-term health outcomes. Using this regression, I construct inflation factors to reflect differential exposure to opioid marketing by state and year. These inflation factors can be applied to reported state-year enrollment data supplied by individual class members to give weight to differential exposure to the alleged misconduct in allocating the Settlement. In the sections below, I describe the data I use for my analysis, the statistical model, and the results. Finally, I describe how this methodology will be applied to class members' enrollment information to calculate settlement shares for each class member, including approaches to addressing incomplete data and different types of TPPs (those that only covered medical care and those that only covered pharmaceutical care).

⁷ A. Alpert, W.N. Evans, E.M.J. Lieber, and D. Powell, "Origins of The Opioid Crisis and Its Enduring Impacts," *Quarterly Journal of Economics*, 2022, 137(2), pp.1139–79.

⁸ C. Arteaga and V. Barone, "A Manufactured Tragedy: The Origins and Deep Ripples of The Opioid Epidemic," working paper, October 10, 2023, (https://viquibarone.github.io/baronevictoria/Opioids_ArteagaBarone.pdf).

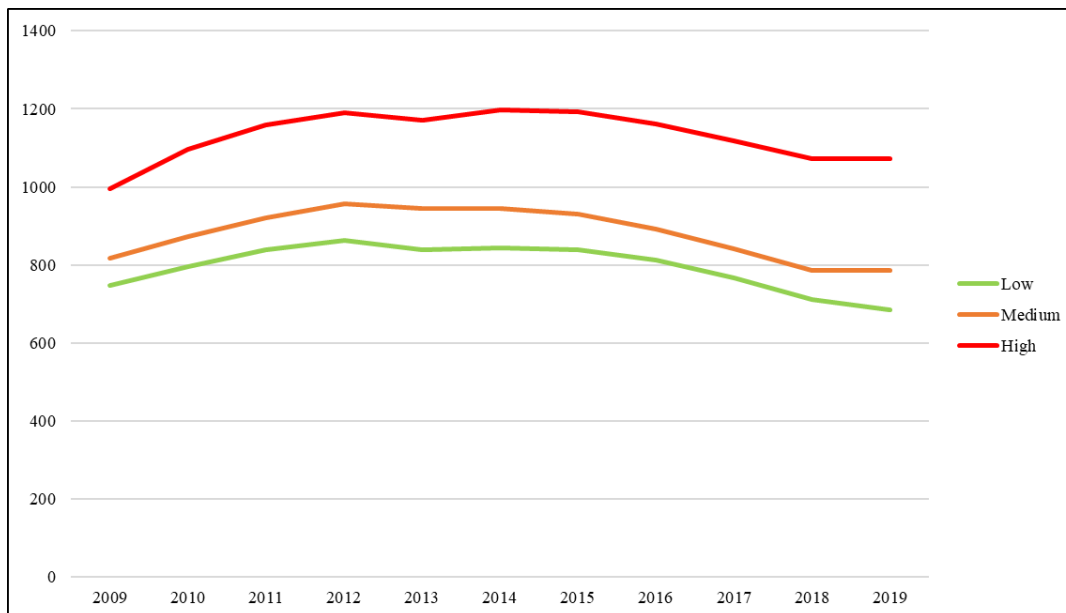
⁹ Dennett and Gonsalves, *op. cit.*, Supplemental Appendix, Figure S2.

B. Data

15. My allocation method will combine self-reported enrollment data from class members with a set of multipliers that account for the differential impact of the misconduct by geography and year. Each class member will be asked to report the number of covered beneficiaries in each state where their beneficiaries reside and each year of the damage period.

16. For my dependent variable (the variable to be explained in the regression analysis described below), I use data from the Drug Enforcement Agency on total quantities sold of opioids by state and year (2009 to 2019, which are the latest data I have available) measured in Milligrams of Morphine Equivalents (MMEs). Independent variables include sociodemographic characteristics of each state based on estimates from the U.S. Census (share of the population aged 0-18, 19-25, 26-34, 35-54, 55-64, and 65+, race/ethnicity, and the share of the state population living in poverty) as control variables in the analysis.

17. Figure 1 charts the average MMEs per capita for states categorized as low, medium, and high exposure, respectively. As expected, there is a clear difference in the levels of MMEs across the three exposure groups. To account for other changes in population characteristics that may also be associated with trends in MMEs per capita, I estimate a linear regression with fixed effects for year (leaving out 2009 as the comparator), dummy variables for states in the medium and high exposure categories (leaving out the low exposure category as the comparator), and interactions between year and the two exposure category variables, in addition to the sociodemographic variables listed above. The regression accounts for clustering at the state level and population weights. Output from this regression is reported in the appendix.

Figure 1: Mean MMEs per Capita, by State Exposure Level

18. In the regression analysis, the variables capturing the main effect of opioid marketing show a significant and positive impact of exposure. For the medium exposure states, this impact is relatively constant over time; for the high exposure states, the effect increases over time. Using the coefficients from the model, I calculate the incremental contribution of exposure category on MMEs per capita for each year and calculate a multiplier that can be applied to the number of covered beneficiaries by exposure category. The adjusted MMEs per capita in 2009 in low exposure states is the reference and its multiplier is set to one; all other multipliers represent a ratio of MMEs per capita in that year and exposure group as compared to the 2009 low exposure rate, after adjusting for trends in sociodemographic characteristics of the states.¹⁰ These multipliers are presented in the table below.

¹⁰ I tested several models, including some without any demographic covariates. I selected the model with demographic covariates as its explanatory power (measured by R^2 value) of 0.61 exceeded the model without covariates (0.51).

Table 1: Multipliers Calculated from Regression Analysis of MMEs per Capita¹¹

	Low	Medium	High
Year	Exposure	Exposure	Exposure
2009	1.00	1.06	1.27
2010	1.01	1.12	1.37
2011	1.05	1.15	1.36
2012	1.07	1.18	1.32
2013	1.05	1.19	1.33
2014	1.07	1.20	1.36
2015	1.10	1.18	1.36
2016	1.11	1.17	1.37
2017	1.07	1.17	1.38
2018	1.04	1.16	1.37
2019	1.04	1.20	1.39

C. Weighting of Covered Enrollees for Exposure Level by Year

19. Using the weights from Table 1, I will calculate weighted enrollment for each TPP class member that submits data to the Court. Weighted enrollment will be totaled for claimants and settlement shares will be calculated as a percentage of the total weighted enrollment. To illustrate, Table 2 imagines a hypothetical example with three TPP class members who report enrollment data as follows:

Table 2: Example Application of Multipliers in a 3-TPP Class

Exposure Category	TPP # 1			TPP # 2			TPP # 3		
	Low	Medium	High	Low	Medium	High	Low	Medium	High
2009	0	0	0	0	0	10,000	0	1,000	0
2010	0	0	0	0	0	10,000	0	2,000	0
2011	0	0	0	0	0	10,000	0	3,000	0
2012	0	0	0	0	0	10,000	0	4,000	0
2013	5,000	5,000	0	0	0	10,000	0	5,000	0
2014	5,000	5,000	0	0	0	10,000	0	5,000	0
2015	5,000	5,000	0	0	0	10,000	0		0
2016	5,000	5,000	0	0	0	10,000	0		0
2017	5,000	5,000	0	0	0	10,000	0		0
2018	5,000	5,000	0	0	0	10,000	0		0
2019	5,000	5,000	0	0	0	10,000	0		0

¹¹ The ARCOS data I used ends in 2019 and I am not able to access the detailed data needed to compute MMEs per state after that time period. For later years, I propose using the estimated 2019 weights as a proxy. Given that there was little change in the weights from 2018 to 2019, holding them steady for 2020 is a reasonable approach.

20. To calculate the allocation for this hypothetical 3-TPP class, I first multiply the number of covered beneficiaries in each cell by the respective weight for the exposure category and year combination. I then sum these weighted enrollment data for each TPP and for the class as a whole. The Settlement share for each TPP is the ratio of its weighted enrollment to the total weighted enrollment for the class as a whole. In my example, those shares are 31.4%, 59.3%, and 9.3% for TPP #1, #2, and #3 respectively. An unweighted calculation of enrollment shares would yield 35%, 55% and 10% respectively, showing how my methodology assigns a larger share of the Settlement to TPP#2 based on their coverage of beneficiaries in high marketing exposure states.

D. Calculating Shares for TPPs with Incomplete Data

21. There may be situations where TPPs can demonstrate they were paying for health care during the relevant period but do not have complete data on enrollment by state and year. If it is possible to determine the share of enrollment in low, medium, and high exposure states for any year, we can use those shares to allocate enrollment in other years. For TPPs with information on the states where their enrollees are located (e.g., a Taft-Hartley Fund that covers union members in Illinois and Wisconsin) but without specific enrollment numbers in each state, we can assume equal shares across those states. For other kinds of missing data, it may be possible to interpolate or extrapolate enrollment figures, using linear methods.

E. Calculating Shares for TPPs that Cover Only Prescription Drugs or Only Medical Care

22. Published research has examined the relative importance of prescription drugs and other medical care as drivers of spending for people with opioid use disorder in commercial insurance.¹² Health care spending for people with opioid use disorder is more than eightfold that of people without opioid use disorder. Spending on prescription drugs represents 13% of all spending for people with opioid use disorder, or 12% of the incremental costs of opioid use

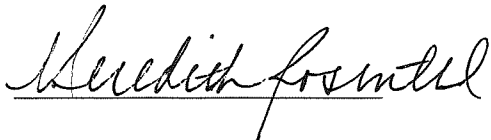
¹² S. Davenport, *et al.*, “Costs and Comorbidities of Opioid Use Disorder,” Milliman White Paper, 2019; A.G. White, *et al.*, “Direct Costs of Opioid Abuse in an Insured Population in the United States,” *Journal of Managed Care & Specialty Pharmacy*, October 26, 2020, 26(10), pp. 1188-1198.

disorder.¹³ Although not all excess use of opioids caused by the alleged misconduct resulted in opioid use disorder, this share is a reasonable approximation for the portion of the overcharges that derives from prescription drugs vs. other medical care utilization.

F. Summary and Conclusions

23. An economically reasonable approach to allocation for the Settlement in this matter recognizes that, while all TPPs were impacted by the alleged misconduct, the quantum of impact varied over time and space because of the nature of Defendants' promotion scheme and factors such as state regulations. The algorithm I propose accounts for these factors to derive a set of weights to apply to covered enrollees. While a similar approach could be undertaken with claims data, in my opinion, using enrollment data as I propose here is more efficient and captures the relative impact of the alleged misconduct across TPPs.

24. Based on my expertise in health economics, experience working with industry data, and knowledge of this matter, I conclude that using the exposure-weighted shares of covered enrollees offers a feasible and fair approach to settlement allocation in this matter.



Meredith Rosenthal, Ph.D.
December 20, 2023

¹³ *Ibid.*, Figure 2. I calculated the share of incremental costs using the difference in prescription drug direct costs for people with and without opioid use disorder, divided by the difference in total direct costs using the data reported in Figure 2.

ATTACHMENT A

CURRICULUM VITAE

Date: November, 2023

NAME: Meredith B. Rosenthal

ADDRESS: Harvard T. H. Chan School of Public Health
677 Huntington Avenue
Boston, MA 02115
Tel: (617) 432-3418
meredith_rosenthal@harvard.edu

BIRTHPLACE: Boston, Massachusetts

EDUCATION:

1998 Health Policy (Economics track), Ph.D., Harvard University

1990 International Relations (Commerce), A.B., Brown University

ACADEMIC APPOINTMENTS:

2011-present C. Boyden Gray Professor of Health Economics and Policy
Department of Health Policy and Management
Harvard School of Public Health

2006-2011 Associate Professor of Health Economics and Policy
Department of Health Policy and Management
Harvard School of Public Health

1998-2006 Assistant Professor of Health Economics and Policy
Department of Health Policy and Management
Harvard School of Public Health

ADMINISTRATIVE APPOINTMENTS:

2017-2018 Senior Associate Dean for Academic Affairs
Harvard T. H. Chan School of Public Health

2013-2017 Associate Dean for Diversity
Harvard T. H. Chan School of Public Health

2019-2023 Faculty Chair, Advanced Leadership Initiative
Harvard University

PROFESSIONAL SOCIETIES:

2014-present Elected Member, National Academy of Medicine (Institute of Medicine)

2004-present American Society of Health Economists

2000-present International Health Economics Association

1995-present AcademyHealth
Planning Committee for 2008 Annual Research Meeting

OTHER PROFESSIONAL EXPERIENCE:

1996-present Academic Affiliate, Greylock McKinnon Associates

1993-1994 Analyst, Health Economics Research, Inc./The Center for Health Economics Research

1990-1993 Consultant, Price Waterhouse, Tax Economics Department

SERVICE:

- 2016-present Member, Massachusetts Center for Health Information and Analysis Oversight Council
- 2013-2017 Board Chair, Massachusetts Health Quality Partners
- 2007-2016 Member, Massachusetts Public Health Council

- 2005 Expert Testimony, House Committee on Education and Workforce, House Subcommittee on Employer-Employee Relations, Hearing on Examining Pay-for-Performance Measures and Other Trends in Employer-Sponsored Health Care
- 2003 Expert Testimony, Senate Special Committee on Aging, Hearing on Direct to Consumer Advertising of Prescription Drugs: Exploring the Consequences
- 2001 Chair, Massachusetts Special Commission on Physician Compensation

HONORS AND DISTINCTIONS:

- 2016 AcademyHealth Paper of the Year Award
- 2016 Harvard TH Chan School of Public Health Student Mentoring Award
- 2015 Harvard TH Chan School of Public Health Advancement of Women Faculty Mentoring Award
- 2014 Harvard School of Public Health Junior Faculty Mentoring Award
- 2011 Harvard School of Public Health Teaching Citation
- 2010 Academy of Management Best Theory to Practice Paper in Health Care Management
- 2006 Alfred P. Sloan Foundation Industry Studies Fellowship
- 2003 Labelle Lectureship in Health Policy, McMaster University

MAJOR ADMINISTRATIVE RESPONSIBILITIES:

- 2016-2018 University President's Task Force on Inclusion and Belonging
- 2012-2014 Harvard School of Public Health Faculty Council, Vice-Chair (2012)
- 2007-2014 Harvard School of Public Health Committee on Admissions and Degrees, Chair (2010)
- 2007 Co-Chair, Harvard School of Public Health Child Care Task Force
- 2006-2011 Harvard School of Public Health Committee on the Concerns of Women Faculty
- 2000-present Executive Committee on Higher Degrees in Health Policy, Harvard University
- 1999-present Admissions Committee, Ph.D. Program in Health Policy, Harvard University

EDITORIAL ACTIVITIES:

1997-present Referee: *Journal of Health Economics, Inquiry, Health Services Research, Health Affairs, Journal of the American Medical Association, New England Journal of Medicine, and others*

2012-2015 Member, *New England Journal of Medicine*, Perspective Advisory Board

2008-2014 Associate Editor, *Medical Care*, Research and Review

1997-1998 Assistant Editor, Evidence-based Health Policy and Management

MAJOR RESEARCH INTERESTS:

1. Market-oriented health policy
2. Physician payment incentives
3. Consumerism and consumer-directed health plans
4. Economics of the pharmaceutical industry

RESEARCH SUPPORT:

Past Funding:

2015-2021 Accelerating the Use of Evidence-based Innovations in Healthcare Systems, AHRQ, *Principal Investigator*

2016-2021 Identifying Cascades of Low-Value Care and the Organizational Practices that Prevent Them, AHRQ, *Co-Investigator*

2016-2018 Generic Drug Pricing: Actionable Research for Policy, Commonwealth Fund, *Principal Investigator*

2015-2017 Improving the Value of Health Care Choices, Arnold Foundation, *Principal Investigator*

2012-2017 Optimizing Ambulatory Patient Safety in Partnership with Primary Care Transformation, HMS Gift/CRICO, *Co-Principal Investigator*

2016-2017 Physician Payment in ACOs, Arnold Foundation, *Principal Investigator*

2013-2015 Understanding the Use and Impact of Price Data in Health Care, RWJF, *Co- Investigator*

2013-2015 Impact of Price Transparency Tools on Consumer Behavior, RWJF, *Co- Investigator*

2013-2015 Getting the Complete Picture: What Does the Body of Research on the Patient-Centered Medical Home Really Tell Us? CMWF, *Principal Investigator*

2013-2015 Prevalence and Variation in Over-Use of Health Services in Commercially Insured Patients, Peter G. Peterson Foundation, *Principal Investigator*

2013-2015 Measuring Overuse of Health Care: Are Providers and Patients ‘Choosing Wisely’?, CMWF, *Co-investigator*

2013-2014 Prevalence and Variation in Over-Use of Health Services in Medicare: Choosing Wisely, RWJF, *Co-investigator*

- 2012-2015 Evaluating Sequential Strategies to Reduce Readmission in Diverse Populations, AHRQ, *Co-investigator*
- 2010-2014 Factors Associated with Effective Implementation of a Surgical Safety Checklist, AHRQ (R18), *Co-investigator*
- 2010-2014 A Randomized Trial of Behavioral Economic Interventions to Reduce CVD Risk, NIA (RC4), *Co-investigator*
- 2008-2010 Rewarding Quality Diabetes Management, RWJF/Hudson Health Plan, *Principal Investigator*
- 2008-2009 Effects of High-Deductible Health Plans on Families with Chronic Conditions, RWJF/Harvard Pilgrim Healthcare Plan, *Co-Investigator*
- 2008-2008 Implications of Value-Based Purchasing for Health Disparities: A Synthesis of the Evidence, Office of Minority Health, Department of Health & Human Services, *Principal Investigator*
- 2008-2008 Payment Reform Opportunities for Medicaid Programs, University of Pittsburgh, *Principal Investigator*
- 2007-2009 Changes in Health Care Financing and Organization: How does Fragmentation of Care Contribute to the Costs of Care? RWJF/HCFO, *Co-investigator*
- 2006-2008 Evaluating the Impact of a Novel Pay for Performance Program in a Medicaid Managed Care Plan, The Commonwealth Fund, *Principal Investigator*
- 2006-2008 Sloan Industry Studies Fellowship for Meredith Rosenthal, Alfred P. Sloan Foundation, *Principal Investigator*
- 2005-2008 Incentive Formularies and the Costs and Quality of Care, Agency for Healthcare Research and Quality, *Co-investigator*
- 2005-2007 Strategies to Improve the Value of Health Benefit Spending for Low-Wage Workers, The Commonwealth Fund, *Principal Investigator*
- 2005-2007 Uptake and Impact of Health Risk Appraisals, RWJ Health Care Financing and Organization Initiative, *Principal Investigator*
- 2003-2007 The Patterns and Impact of Value Based Purchasing, Agency for Healthcare Research and Quality, *Co-investigator*
- 2002-2007 Coverage, Organization of Care, and Colorectal Screening, National Institutes of Health, *Co-investigator*

Current Funding

2019-2022 Price, Spending and Utilization Impacts of Vertical Integration in Massachusetts, Laura and John Arnold Foundation

2018-2022 Generic cancer drugs: pricing and affordability, American Cancer Society

In this study there will be extensive conducting of empirical research using pharmaceutical data and analyzing economic and policy issues related to health care cost control.

Role: Co-Investigator

TEACHING EXPERIENCE

2021-present Health Policy 2000: Core Course for the PhD Program in Health Policy

2016-present Health Policy and Management 260: Health Economics with Applications to Global Health Policy

2003-present Health Policy and Management 209: Economics for Health Policy

2013-2014 Global Health and Health Policy 50 (Harvard College): The Quality of Care in the United States

1999-2001 Health Policy and Management 507: Mental Health Economics and Policy in the United States

BIBLIOGRAPHY

Peer-Reviewed Articles

1. **Rosenthal MB**, Geraty RD, Frank RG, Huskamp HA. Psychiatric provider practice management companies: Adding value to behavioral health care? *Psychiatric Services*. 1999 Aug;50(8):1011-13.
2. **Rosenthal MB**. Risk sharing in managed behavioral health care. *Health Affairs*. 1999 Sept-Oct;18(5):204-13.
3. Huskamp HA, **Rosenthal MB**, Frank RG, Newhouse JP. The Medicare prescription drug benefit: How will the game be played? *Health Affairs*. 2000 Mar-Apr;19(2):8-23.
4. **Rosenthal MB**. Risk sharing and the supply of mental health services. *Journal of Health Economics*. 2000 Nov;19(6):1047-65.
5. Cutler DM, Epstein AM, Frank RG, Hartman RS, King C, Newhouse JP, **Rosenthal MB**, Vigdor ER. How good a deal was the tobacco settlement?: Assessing payments to Massachusetts. *Journal of Risk and Uncertainty*. 2000;21(2/3):235-61.
6. **Rosenthal MB**, Frank RG, Buchanan JL, Epstein AM. Scale and structure of capitated physician organizations in California. *Health Affairs*. 2001 Jul-Aug;20(4):109-19.
7. **Rosenthal MB**, Landon BE, Huskamp HA. Managed care and market power: Physician organizations in four markets. *Health Affairs*. 2001 Sept-Oct;20(5):187-93.
8. Frank RG, **Rosenthal MB**. Health plans and selection: Formal risk adjustment vs. market design and contracts. *INQUIRY: The Journal of Health Care Organization, Provision, and Financing*. 2001 Fall;38(3):290-8.

9. Cutler DM, Gruber J, Hartman RS, Landrum ME, Newhouse JP and **Rosenthal MB**. The economic impacts of the tobacco settlement. *Journal of Policy Analysis and Management*. 2002 Winter; 21(1):1-19.
10. **Rosenthal MB**, Berndt ER, Donohue JM, Frank RG, and Epstein AM. Promotion of prescription drugs to consumers. *New England Journal of Medicine*. 2002 Feb; 346(7):498-505.
11. **Rosenthal MB** and Newhouse JP. Managed care and efficient rationing. *Journal of Health Care Finance*. 2002 Summer;28(4):1-10.
12. **Rosenthal MB**, Frank RG, Buchanan JL, and Epstein AM. Transmission of financial incentives to physicians by intermediary organizations in California. *Health Affairs*. 2002 Jul-Aug;21(4):197-205.
13. Mello M, **Rosenthal MB**, and Neumann PJ. Direct-to-consumer advertising and shared liability for pharmaceutical manufacturers. *JAMA*. 2003 Jan 22-29;289(4):477-81.
14. **Rosenthal MB**, Fernandopulle R, Song HR, and Landon BE. Paying for quality: Providers' incentives for quality improvement. *Health Affairs*. 2004 March-April;23(2):127-41.
15. **Rosenthal MB** and Milstein A. Awakening consumer stewardship of health benefits: Prevalence and differentiation of new health plan models. *Health Services Research*. 2004 Aug;39(4):1055-70.
16. Donohue JM, Berndt ER, **Rosenthal MB**, Epstein AM, and Frank RG. Effects of pharmaceutical promotion on adherence to the treatment guidelines for depression. *Medical Care*. 2004 Dec;42(12):1176-85.
17. **Rosenthal MB**. Doughnut-hole economics. *Health Affairs*. 2004 Nov-Dec; 23(6):129-35.
18. **Rosenthal MB**, Frank RG, Li Z, and Epstein AM. Early experience with pay-for-performance: From concept to practice. *JAMA*. 2005 Oct 12;294(14):1788-93.
19. **Rosenthal MB**, Hsuan C. and Milstein A. A report card on the freshman class of consumer-directed health plans. *Health Affairs*. 2005 Nov-Dec;24(6):1592-1600.
20. **Rosenthal MB**, Zaslavsky AM and Newhouse JP. The geographic distribution of physicians revisited. *Health Services Research*. 2005 Dec;40(6):1931-52.
21. **Rosenthal MB** and Frank RG. What is the empirical basis for paying for quality in health care? *Medical Care Research and Review*. 2006 April;63(2):135-57.
22. **Rosenthal MB** and Daniels NB. Beyond competition: The normative implications of consumer-driven health plans. *Journal of Health Politics, Policy, and Law*. 2006 Jun;31(3):671-86.
23. Landon BE, **Rosenthal MB**, Normand S-LT, Spettell C, Lessler A, Underwood HR, Newhouse JP. Incentive formularies and changes in prescription drug spending. *American Journal of Managed Care*. 2007 June;13(6):360-69.
24. **Rosenthal MB**, Minden S, Manderscheid R, Henderson M. A typology of organizational and contractual arrangements for purchasing and delivery of behavioral health care. *Administration and Policy in Mental Health and Mental Health Services Research*. 2006 Jul;33(4):461-9.
25. **Rosenthal MB**, Landon BE, Normand S-LT, Frank RG, Epstein AM. Pay for performance in commercial HMOs. *New England Journal of Medicine*. 2006 Nov 2;355(18):1895-1902.
26. Mehrotra A, Epstein AM, **Rosenthal MB**. Do integrated medical groups provide higher-quality medical care than individual practice associations? *Annals of Internal Medicine*. 2006 Dec 5;145(11):826-33.

27. Donohue JM, Cevasco M, **Rosenthal MB**. A decade of direct-to-consumer advertising of prescription drugs. *New England Journal of Medicine*. 2007 Aug 16;357(7):673-81.
28. **Rosenthal MB**. Pay for performance and beyond. *Expert Review of Pharmacoeconomics and Outcomes Research*. 2007;7(4):351-5.
29. **Rosenthal MB**, Landon BE, Howitt K, Song HR, Epstein AM. Climbing up the pay-for-performance learning curve: Where are the early adopters now? *Health Affairs*. 2007 Nov-Dec;26(6):1674-82.
30. **Rosenthal MB**, Landon BE, Normand S-LT, Frank RG, Ahmad TS, Epstein AM. Employers' use of value-based purchasing strategies. *JAMA*. 2007 Nov;298(19):2281-8.
31. **Rosenthal MB**, Landrum MB, Meara E, Huskamp HA, Conti RM, Keating NL. Using performance data to identify preferred hospitals. *Health Services Research*. 2007 Dec;42(6):2109-19.
32. Timbie JW, Newhouse JP, **Rosenthal MB**, Normand S-LT. A cost-effectiveness framework for profiling the value of hospital care. *Medical Decision Making*. 2008 May-Jun;28(3):419-34.
33. Landon BE, **Rosenthal MB**, Normand SL, Frank RG, Epstein AM. Quality monitoring and management in commercial health plans. *American Journal of Managed Care*. 2008 Jun;14(6):377-86.
34. Meara E, **Rosenthal MB**, Sinaiko A, Baicker K. State and Federal approaches to health reform: What works for the working poor? *Forum for Health Economics and Policy*. 2007 July;10(1).
35. Mello MM, **Rosenthal MB**. Wellness programs and lifestyle discrimination - the legal limits. *New England Journal of Medicine*. 2008 Jul;359(2):192-9.
36. Camillus JA, **Rosenthal MB**. Health care coalitions: From joint purchasing to local health reform. *Inquiry*. 2008 Summer;45(2):142-52.
37. Schneider EC, **Rosenthal MB**, Gatsonis CG, Zheng J, Epstein AM. Is the type of Medicare insurance associated with colorectal cancer screening prevalence and selection of screening strategy? *Medical Care*. 2008 Sept;46(9):S84-90.
38. **Rosenthal MB**, DeBrantes FS, Sinaiko AD, Frankel M, Robbins RD, Young S. Bridges to excellence--Recognizing high quality care: Analysis of physician quality and resource use. *American Journal of Managed Care*. 2008 Oct;14(10):670-7.
39. Bae, SJ, **Rosenthal MB**. Patients with multiple chronic conditions do not receive lower quality of preventive care. *Journal of General Internal Medicine*. 2008 Sept;23(12):1933-9.
40. Timbie JW, Shahian DM, Newhouse JP, **Rosenthal MB**, Normand S-LT. Composite measures for hospital quality using quality-adjusted life years. *Statistics in Medicine*. 2009 Jan;28(8):1238-54.
41. **Rosenthal MB**, Landon BE, Normand S-LT, Ahmad TS, Epstein AM. Engagement of health plans and employers in addressing racial and ethnic disparities in health care. *Medical Care Research and Review*. 2009 Apr;66(2):219-31.
42. DeBrantes FS, D'Andrea G, **Rosenthal MB**. Should health care come with a warranty? *Health Affairs*. 2009 Jun;28(4):w678-87.
43. Huskamp HA, **Rosenthal MB**. Health risk appraisals: How much do they influence employees' health behavior? *Health Affairs*. 2009 Sept/Oct;28(5):1532-40.
44. **Rosenthal MB**, Li Z, Robertson AD, Milstein A. Impact of financial incentives for prenatal care on birth outcomes and spending. *Health Services Research*. 2009 Oct;44(5):1465-79.

45. **Rosenthal MB**, Li Z, Milstein A. Do patients continue to see physicians who are removed from a PPO network? *American Journal of Managed Care*. 2009 Oct;15(10):713-9.
46. Bae SJ, **Rosenthal MB**. Pharmaceutical promotion, prior authorisation and the use of erectile dysfunction medications in the US Medicaid population. *Journal of Management and Marketing in Healthcare*. 2009 Nov;2(4):384-400.
47. Mullen K, Frank RG, **Rosenthal MB**. Can you get what you pay for? Pay-for-performance and the quality of health care providers. *RAND Journal of Economics*. 2010 Spring;41(1):64-91.
48. Sinaiko A, **Rosenthal MB**. Consumer experience with a tiered physician network: Early evidence. *American Journal of Managed Care*. 2010 Feb;16(2):123-30.
49. Gilfillan RJ, Tomcavage J, **Rosenthal MB**, Davis DE, Graham J, Roy JA, Pierdon SB, Bloom FJ Jr, Graf TR, Goldman R, Weikel KM, Hamory BH, Paulus RA, Steele GD Jr. Value and the medical home: Effects of transformed primary care. *American Journal of Managed Care*. 2010 Aug;16(8):607-14.
50. Van Herck P, De Smedt D, Annemans L, Remmen R, **Rosenthal MB**, Sermeus W. Systematic review: Effects, design choices, and context of pay-for-performance in health care. *BMC Health Services Research*. 2010 Aug; 10(1):247.
51. Weinick RM, Chien AT, **Rosenthal MB**, Bristol SJ, Salamon J. Hospital executives' perspectives on pay-for-performance and racial/ethnic disparities in care. *Medical Care Research and Review*. 2010 Oct;67(5):574-89.
52. Choudhry NK, **Rosenthal MB**, Milstein A. Assessing the evidence for value-based insurance design. *Health Affairs*. 2010 Nov;29(11):1988-94.
53. Kullgren JT, Galbraith AA, Hinrichsen VL, Miorshnik I, Penfold RB, **Rosenthal MB**, Landon BE, Lieu TA. Health care use and decision making among lower-income families in high-deductible health plans. *Archives of Internal Medicine*. 2010 Nov 22; 170(21):1918-25.
54. Galbraith AA, Ross-Degnan R, Somerai SB, Abrams AM, Kleinman K, **Rosenthal MB**, Wharam JF, Adams AS, Miroshnik I, Lieu TA. Use of well-child visits in high-deductible health plans. *American Journal of Managed Care*. 2010 Nov;16(11):833-40.
55. Chien AT, Li Z, **Rosenthal MB**. Improving timely childhood immunizations through pay for performance in Medicaid-managed care. *Health Services Research*. 2010 Dec;45(6p2):1934-47.
56. Turbyville S, **Rosenthal MB**, Pawlson G, Scholle S. Health plan resource use: Bringing us closer to value-based decisions. *American Journal of Managed Care*. 2011 Jan;17(1):68-74.
57. Galbraith AA, Ross-Degnan R, Soumerai S, **Rosenthal MB**, Gay C, Lieu TA. Nearly half of families in high-deductible health plans whose members have chronic conditions face substantial financial burden. *Health Affairs*. 2011 Feb;30(2):322-31.
58. Singer SJ, Burgers J, Friedberg M, **Rosenthal MB**, Leape L, Schneider, E. Defining and measuring integrated patient care: Promoting the next frontier in health care delivery. *Medical Care Research and Review*. 2011 Feb;68(1):112-27.
59. Landon BE, **Rosenthal MB**, Normand S-LT, Spettell C, Lessler A, Underwood HR, Newhouse JP. Incentive formularies: Spending and utilization for 3 common drug classes. *American Journal of Pharmacy Benefits*. 2011 May/Jun;3(3):152-64.
60. Hussey PS, Ridgely MS, **Rosenthal MB**. The PROMETHEUS bundled payment experiment: Slow start shows problems in implementing new payment models. *Health Affairs*. 2011 Nov;30(11):2116-24.

61. Sinaiko AD, Eastman D, **Rosenthal MB**. How report cards on physicians, physician groups, and hospitals can have greater impact on consumer choices. *Health Affairs*. 2012 Mar;31(3):602-11.
62. Joynt KE, **Rosenthal MB**. Hospital value-based purchasing: Will Medicare's new policy exacerbate disparities? *Circulation: Cardiovascular Quality and Outcomes*. 2012 Mar;5(2):148-9.
63. Conti RM, **Rosenthal MB**, Polite BN, Bach PB, Shih YC. Infused chemotherapy use in the elderly after patent expiration. *Journal of Oncology Practice*. 2012 May 1;8(3S):e18s-e23s.
64. Galbraith AA, Soumerai SB, Ross-Degnan D, **Rosenthal MB**, Gay C, Lieu TA. Delayed and forgone care for families with chronic conditions in high-deductible health plans. *Journal of General Internal Medicine*. 2012 Sep;27(9):1105-11.
65. Weissman JS, Bailit M, D'Andrea G, **Rosenthal MB**. The design and application of shared savings programs: Lessons from early adopters. *Health Affairs*. 2012 Sep;31(9):1959-68.
66. Chien AT, Eastman D, Li Z, **Rosenthal MB**. Impact of a pay for performance program to improve diabetes care in the safety net. *Preventive Medicine*. 2012 Nov;55:S80-5.
67. Conti RM, Bernstein AC, Villaflor VM, Schilsky RL, **Rosenthal MB**, Bach PB. Prevalence of off-label use and spending in 2010 among patent-protected chemotherapies in a population-based cohort of medical oncologists. *Journal of Clinical Oncology*. 2013 Mar 20;31(9):1134-9.
68. **Rosenthal MB**, Friedberg MW, Singer SJ, Eastman D, Li Z, Schneider EC. Effect of a multipayer patient-centered medical home on health care utilization and quality: The Rhode Island chronic care sustainability initiative pilot program. *JAMA Internal Medicine*. 2013 Nov 11;173(20):1907-13.
69. Clarke JL, Miff S, Cutler D, Udow-Phillips M, Wolterman D, **Rosenthal MB**, McGonigal J, Gelinis LS, DeMotte C, Hatlie MJ, Collier S, Hicks D, Doty J, Goeschel C, Rosen M, Weaver SJ, Johnson A, Welch R, Nass PL, McGonigal K. Navigating to excellence: solutions driving exceptional results. *American Journal of Medical Quality*. 2014 Jan-Feb;29(1):3S-18S.
70. Friedberg MW, Schneider EC, **Rosenthal MB**, Volpp K, Werner R. Association between participation in a multipayer medical home intervention and changes in quality, utilization, and costs of care. *JAMA*. 2014 Feb 26;311(8):815-25.
71. Alidina S, **Rosenthal MB**, Schneider EC, Singer SJ, Friedberg MW. Practice environments and job satisfaction in patient-centered medical homes. *The Annals of Family Medicine*. 2014 Jul-Aug;12(4):331-7.
72. Alidina S, Schneider EC, Singer SJ, **Rosenthal MB**. Structural capabilities in small- and medium-sized patient-centered medical homes. *American Journal of Managed Care*. 2014 Jul;20(7):e265-77.
73. Sinaiko AD, **Rosenthal MB**. The impact of tiered physician networks on patient choices. *Health Services Research*. 2014 Aug; 49(4):1348-63.
74. Edwards ST, Abrams MK, Baron RJ, Berenson RA, Rich EC, Rosenthal GE, **Rosenthal MB**, Landon BE. Structuring payment to medical homes after the Affordable Care Act. *Journal of General Internal Medicine*. 2014;29(10):1410-3.
75. JW Peabody, X Huang, R Shimkhada, **Rosenthal MB**. Managing specialty care in an era of heightened accountability: Emphasizing quality and accelerating savings. *American Journal of Managed Care*. 2015 Apr; 21(4):284-292.

76. Colla CH, Sequist TD, **Rosenthal MB**, Schpero WL, Gottlieb DJ, Morden NE. Use of non-indicated cardiac testing in low-risk patients: Choosing wisely. *BMJ: Quality and Safety*. 2014;24(2):149-53.
77. Colla CH, Morden NE, Sequist TD, Schpero WL, **Rosenthal, MB**. Choosing wisely: Prevalence and correlates of low-value health care services in the United States. *Journal of General Internal Medicine*. 2014;30(2):221-8.
78. H Song, AT Chien, J Fisher, J Martin, AS Peters, K Hacker, **MB Rosenthal**, SJ Singer. Development and validation of the primary care team dynamics survey. *Health Services Research*. 2015 Jun;50(3):897-921.
79. Huang X, **Rosenthal MB**. Overuse of cardiovascular services: evidence, causes, and opportunities for reform. *Circulation*. 2015 Jul 21;132(3):205-14.
80. **Rosenthal MB**, Landrum ME, Robbins J, Schneider EC. Pay for performance in Medicaid: Evidence from three natural experiments. *Health Services Research*. 2016 Aug;51(4):1444-66.
81. Friedberg MW, **Rosenthal MB**, Werner RM, Volpp KG, Schneider EC. Effects of a medical home and shared savings intervention on quality and utilization of care. *JAMA Internal Medicine*. 2015 Aug;175(8):1362-8.
82. **Rosenthal MB**, Sinaiko AD, Eastman D, Chapman B, Partidge G. Impact of the Rochester medical home initiative on primary care practices, quality, utilization, and costs. *Medical Care*. 2015 Nov;53(11):967-73.
83. Asch DA, Troxel AB, Stewart WF, Sequist TD, Jones JB, Hirsch AG, Hoffer K, Zhu J, Wang W, Hodlofski A, Frasch AB, Finnerty D, **Rosenthal MB**, Gangemi K, Volpp KG. Effect of financial incentives to physicians, patients, or both on lipid levels: A randomized clinical trial. *JAMA*. 2015 Nov 10;314(18):1926-35.
84. Song H, Ryan M, Tendulkar S, Fisher J, Martin J, Peters AS, Frolkis JP, **Rosenthal MB**, Chien AT, Singer SJ. Team dynamics, clinical work satisfaction, and patient care coordination between primary care providers: A mixed methods study. *Health Care Management Review*. 2017 Jan/Mar;42(1):28-41.
85. Reibling N, **Rosenthal MB**. The (missed) potential of the patient-centered medical home for disparities. *Medical Care*. 2016 Jan;54(1):9-16.
86. **Rosenthal MB**, Alidina S, Friedberg MW, Singer SJ, Eastman D, Li Z, Schneider EC. A difference-in-difference analysis of changes in quality, utilization and cost following the Colorado multi-payer patient-centered medical home pilot. *Journal of General Internal Medicine*. 2015 Oct;31(3):289-96.
87. Emanuel EJ, Ubel PA, Kessler JB, Meyer G, Muller RW, Navathe AS, Patel P, Pearl R, **Rosenthal MB**, Sacks L, Sen AP, Sherman P, Volpp KG. Using behavioral economics to design physician incentives that deliver high-value care. *Annals of Internal Medicine*. 2016 Jan 19;164(2):114-9.
88. Alidina S, **Rosenthal MB**, Schneider EC, Singer SJ. Coordination within medical neighborhoods: Insights from the early experiences of Colorado patient-centered medical homes. *Health Care Management Review*. 2016 Apr-Jun;41(2):101-12.
89. **Rosenthal MB**, Alidina S, Friedberg MW, Singer SJ, Eastman D, Li Z, Schneider EC. Impact of the Cincinnati aligning forces for quality multi-payer patient centered medical home pilot on health care quality, utilization, and costs. *Medical Care Research and Review*. 2016 Oct;73(5):532-45.

90. Sinaiko AD, **Rosenthal MB**. Examining a health care price transparency tool: Who uses it, and how they shop for care. *Health Affairs*. 2016 Apr;35(4): 662-70.
91. Shields MC, **Rosenthal MB**. Quality of inpatient psychiatric care at VA, other government, nonprofit, and for-profit hospitals: A comparison. *Psychiatric Services*. 2017 Mar;68(3):225-30.
92. Colla CH, Kinsella EA, Morden NE, Meyers DJ, **Rosenthal MB**, Sequist TD. Physician perceptions of choosing wisely and drivers of overuse. *The American Journal of Managed Care*. 2016 May;22(5):337-43.
93. Freaan M., Shelder S., **Rosenthal MB**, Sequist TD, Sommers BD. Health reform and coverage changes among Native Americans. *JAMA Internal Medicine*. 2016 Jun;176(6):858-60.
94. Peiris D, Phipps-Taylor MC, Stachowski CA, Kao LS, Shortell SM, Lewis VA, **Rosenthal MB**, Colla CH. ACOs holding commercial contracts are larger and more efficient than noncommercial ACOs. *Health Affairs*. 2016 Oct;35(10):1849-56.
95. Sinaiko AD, Joynt KE, **Rosenthal MB**. Association between viewing health care price information and choice of health care facility. *JAMA Internal Medicine*. 2016 Dec;176(12):1868-70.
96. Schiavoni KH, Lehmann LS, Guan W, **Rosenthal MB**, Sequist TD, Chien AT. How primary care physicians integrate price information into clinical decision making. *Journal of General Internal Medicine*. 2016 Aug;32(1):81-7.
97. Enomoto LM, Shrestha DP, **Rosenthal MB**, Hollenbeak CS, Gabbay RA. Risk factors associated with 30-day readmission and length of stay in patients with type 2 diabetes. *Journal of Diabetes and Its Complications*. 2016 Oct;31(1):122-7.
98. Chien AT, Ganeshan S, Schuster MA, Lehmann LS, Hatfield LA, Koplan KE, Petty CR, Sinaiko AD, Sequist TD, **Rosenthal MB**. The effect of price information on the ordering of images and procedures. *Pediatrics*. 2017 Feb;139(2):1-8.
99. Colla CH, Morden NE, Sequist TD, Mainor AJ, Li Z, **Rosenthal MB**. Payer type and low-value care: Comparing choosing wisely services across commercial and Medicare populations. *Health Services Research*. 2018 Apr;53(2): 730-46.
100. Sinaiko AD, Landrum MB, Meyers DJ, Alidina S, Maeng DD, Friedberg MW, Kern LM, Edwards AM, Fliieger SP, Houck PR, Peele P, Reid RJ, McGraves-Lloyd K, Finison K, **Rosenthal MB**. Synthesis of research on patient-centered medical homes brings systematic differences into relief. *Health Affairs (Millwood)*. 2017 Mar;36(3):500-8.
101. Chien AT, Lehmann LS, Hatfield LA, Koplan KE, Petty CR, Sinaiko AD, **Rosenthal MB**, Sequist TD. A randomized trial of displaying paid price information on imaging study and procedure ordering rates. *Journal of General Internal Medicine*. 2016 Dec;32(4):434-8.
102. Thirukumar CP, Glance LG, Temkin-Greener H, **Rosenthal MB**, Li Y. Impact of Medicare's nonpayment program on hospital-acquired conditions. *Medical Care*. 2017 May;55(5):447-55.
103. Shea JA, Adehare A, Volpp KG, Troxel AB, Finnerty D, Hoffer K, Isaac T, **Rosenthal MB**, Sequist TD, Asch DA. Patients' views of a behavioral intervention including financial incentives. *American Journal of Managed Care*. 2017 Jun;23(6):366-71.
104. Schpero WL, Morden NE, Sequist TD, **Rosenthal MB**, Gottlieb DJ, Colla CH. For selected services, blacks and Hispanics more likely to receive low-value care than whites. *Health Affairs*. 2017 Jun;36(6):1065-9.

105. Elshaug AG, **Rosenthal MB**, Lavis JN, Brownlee S, Schmidt H, Nagpal S, Littlejohns P, Srivastava D, Tunis S, Saini V. Levers for addressing medical underuse and overuse: achieving high-value health care. *Lancet*. 2017 July 8;390:191-202.
106. Brooks, J.V., Singer, S.J., **Rosenthal, MB.**, Chien, A.T. and Peters, A.S., 2017. Feeling inadequate: Residents' stress and learning at primary care clinics in the United States. *Medical Teacher*. 2017; pp.1-8.
107. Galbraith AA, Meyers DJ, Ross-Degnan D, Burns ME, Vialle-Valentin CE, Larochelle MR, Touw S, Zhang F, **Rosenthal MB**, Balaban RB. Long-term impact of a postdischarge community health worker intervention on health care costs in a safety-net system. *Health Services Research*. 2017 Dec;52(6):2061-78.
108. Sheridan B, Chien AT, Peters AS, **Rosenthal MB**, Brooks JV, Singer SJ. Team-based primary care: The medical assistant perspective. *Health Care Management Review*, 2018 Apr-Jun;43(2): pp.115-125.
109. Isaac, T., **Rosenthal MB**, Colla, C.H., Morden, N.E., Mainor, A.J., Li, Z., Nguyen, K.H., Kinsella, E.A. and Sequist, TD. Measuring overuse with electronic health records data. *American Journal of Managed Care*. 2018 Jan; 24(1), pp.19-25.
110. **Rosenthal MB**, Colla CH, Morden NE, Sequist TD, Mainor AJ, Li Z, Nguyen KH. Overuse and insurance plan type in a privately insured population. *American Journal of Managed Care*. 2018 Mar; 24(3), pp.140-6.
111. Percac-Lima S, Pace LE, Nguyen KH, Crofton CN, Normandin KA, Singer SJ, **Rosenthal MB**, Chien AT. Diagnostic Evaluation of Patients Presenting to Primary Care with Rectal Bleeding. *Journal of General Internal Medicine*. 2018 Jan; 33(4): 415-22.
112. Haverkamp M, Peiris D, Mainor A, Westert G, **Rosenthal MB**, Sequist T, Colla C. (2018). ACOs with Risk-Bearing Experience Are Likely Taking Steps to Reduce Low-Value Medical Services. *American Journal Of Managed Care*, 24(7), E216.
113. Thirukumar, CP, Glance LG, **Rosenthal MB**, Temkin-Greener H, Balkissoon R, Mesfin A, Li Y. 2018. Impact of Medicare's Nonpayment Program on Venous Thromboembolism Following Hip and Knee Replacements. *Health Services Research*, 53(6), pp.4381-4402.
114. Sinaiko AD, Chien AT, Hassett MJ, Kakani P, Rodin D, Meyers DJ, Fraile B, **Rosenthal MB**, Landrum MB. 2018. What drives variation in spending for breast cancer patients within geographic regions? *Health Services Research*.
115. Pandya A, Asch DA, Volpp KG, Sy S, Troxel AB, Zhu J, Weinstein MC, **Rosenthal MB**, Gaziano TA. 2018. Cost-effectiveness of Financial Incentives for Patients and Physicians to Manage Low-Density Lipoprotein Cholesterol Levels. *JAMA Network Open*, 1(5), pp.e182008-e182008.
116. Conti RM, Nguyen KH and **Rosenthal MB**, 2018. Generic prescription drug price increases: which products will be affected by proposed anti-gouging legislation? *Journal of Pharmaceutical Policy and Practice*, 11(1), p.29.
117. Meyers D.J., Chien AT, Nguyen KH, Li, Z, Singer, SJ and **Rosenthal, MB**, 2019. Association of Team-Based Primary Care With Health Care Utilization and Costs Among Chronically Ill Patients. *JAMA Internal Medicine*, 179(1), pp.54-61.
118. **Rosenthal MB**, Troxel AB, Volpp KG, Stewart WF, Sequist TD, Jones JB, Hirsch AG, Hoffer K, Zhu J, Wang W, Hodlofski A. 2019. Moderating effects of patient characteristics on the impact of financial incentives. *Medical Care Research and Review*, 76(1), pp.56-72.

119. Minden SL, Kinkel RP, Machado HT, Levin JS, **Rosenthal MB**, Iezzoni LI, 2019. Use and cost of disease-modifying therapies by Sonya Slifka Study participants: has anything really changed since 2000 and 2009? *Multiple Sclerosis Journal—Experimental, Translational and Clinical*, 5(1), p.2055217318820888.
120. Ganguli, I, Lupo, C, Mainor, AJ, Raymond, S, Wang, Q, Orav, EJ, Chang, CH, Morden, N.E., **Rosenthal MB**, Colla, C.H. and Sequist, T.D., 2019. Prevalence and Cost of Care Cascades After Low-Value Preoperative Electrocardiogram for Cataract Surgery in Fee-for-Service Medicare Beneficiaries. *JAMA internal medicine*.
121. Pace, LE, Percac-Lima, S, Nguyen, KH, Crofton, CN, Normandin, KA, Singer, SJ, **Rosenthal MB** and Chien, A.T., 2019. Comparing Diagnostic Evaluations for Rectal Bleeding and Breast Lumps in Primary Care: a Retrospective Cohort Study. *Journal of general internal medicine*, pp.1-8.
122. Sinaiko, AD, Kakani, P, and **Rosenthal MB**, 2019. Marketwide Price Transparency Suggests Significant Opportunities For Value-Based Purchasing. *Health Affairs*, 38(9), pp.1514-1522.
123. **Rosenthal MB**, Shortell, S, Shah, ND, Peiris, D, Lewis, VA, Barrera, JA, Usadi, B and Colla, CH, 2019 Dec. Physician practices in Accountable Care Organizations are more likely to collect and use physician performance information, yet base only a small proportion of compensation on performance data. *Health services research*, 54(6), pp.1214-1222.
124. Shields, MC, Singer, J, **Rosenthal MB**, Sato, L, Keohane, C, Janes, M, Boulanger, J, Martins N, and Rabson, B. 2019. Patient Engagement Activities and Patient Experience: Are Patients With a History of Depression the Canary in the Coal Mine?. *Medical Care Research and Review*, p.1077558719850705.
125. Garcia Mosqueira, A, **Rosenthal MB** and Barnett, M.L., 2019. The association between primary care physician compensation and patterns of care delivery, 2012-2015. *INQUIRY: The Journal of Health Care Organization, Provision, and Financing*, 56, p.0046958019854965.
126. Agénor, M., Murchison, G.R., Chen, JT, Bowen, DJ, **Rosenthal, MB**, Haneuse, S, and Austin, SB. 2020 Feb. Impact of the Affordable Care Act on human papillomavirus vaccination initiation among lesbian, bisexual, and heterosexual U.S. women. *Health Services Research*, 55(1), 18-25.
127. Huang, X, Larson, LJ, Wang, L, Spinelli, KJ and **Rosenthal MB**, 2019. Transforming Specialty Practice in Pursuit of Value-Based Care: Results from an Integrated Cardiology Practice. *NEJM Catalyst*, 5(2).
128. Ganguli, I, Simpkin, AL, Colla, CH, Weissman, A, Mainor, AJ, **Rosenthal MB** and Sequist, TD, 2020 Apr. Why do physicians pursue cascades of care after incidental findings? a national survey. *Journal of General Internal Medicine*, pp.1-3.
129. Rodin D, Chien AT, Ellimoottil C, Nguyen PL, Kakani P, Mossanen M, **Rosenthal MB**, Landrum MB, Sinaiko AD. Physician and facility drivers of spending variation in locoregional prostate cancer. *Cancer*. 2020 Apr: 126 (8): 1622-1631
130. Pandya A, Soeteman DI, Gupta A, Kamel H, Mushlin AI, **Rosenthal MB**. Can Pay-for-Performance Incentive Levels be Determined Using a Cost-Effectiveness Framework? *Circulation: Cardiovascular Quality and Outcomes*. 2020 Jul: 13 (7): e006492
131. Brantes F, **Rosenthal MB**, Struijs J. Ensuring the Adoption of the Health Care Warranty: A Well-defined Model to Resolve Issues with Risk and Uncertainty. *NEJM Catalyst Innovations in Care Delivery*. 2020 July: 1(4)

132. Hague E, Comfort L, **Rosenthal MB**, Shortell S, Rodriguez H. Physician Practices and the Late Adoption of Transparent Peer Comparisons for Performance Feedback. *Health Services Research*. 2020 Aug; 55: 114-115
133. Nguyen KH, Chien AT, Meyers DJ, Li Z, Singer SJ, **Rosenthal MB**. Team-Based Primary Care Practice Transformation Initiative and Changes in Patient Experience and Recommended Cancer Screening Rates. *INQUIRY: The Journal of Health Care Organization, Provision, and Financing*. 2020 Aug; 57: 0046958020952911
134. Fisher ES, Shortell SM, O'Malley AJ, Frazee TK, Wood A, Palm M, Colla CH, **Rosenthal MB**, Rodriguez HP, Lewis VA, Woloshin S, Shah N, Meara E. Financial Integration's Impact On Care Delivery And Payment Reforms: A Survey Of Hospitals And Physician Practices. *Health Affairs*. 2020 Aug; 39 (8): 1302-1311
135. Ganguli I, Sheridan B, Gray J, Chernew M, **Rosenthal MB**, Neprash H. Physician work hours and the gender pay gap—evidence from primary care. *New England Journal of Medicine*. 2020 Oct; 383 (14): 1349-1357
136. Ganguli I, Lupo C, Mainor AJ, Wang Q, Orav EJ, **Rosenthal MB**, Sequist TD, Colla CH. Assessment of Prevalence and Cost of Care Cascades After Routine Testing During the Medicare Annual Wellness Visit. *JAMA*. 2020 Dec, 3(12): e2029891-e2029891
137. Rodin D, Glicksman R, Clark R, Kakani P, Cheung MC, Singh S, **Rosenthal MB**, Sinaiko A. Are We Choosing Wisely? Mammographic Surveillance in Older Women with Breast Cancer in Canada and the United States. *International Journal of Radiation Oncology*. 2020 Nov. 108 (3): e386
138. Gourevitch RA, Chien AT, Bambury EA, Shah NT, Riedl C, **Rosenthal MB**, Sinaiko AD. Patterns of Use of a Price Transparency Tool for Childbirth Among Pregnant Individuals with Commercial Insurance. *JAMA Network Open*. 2021 Aug 2;4(8):e2121410-
139. Shields MC, Singer J, **Rosenthal MB**, Sato L, Keohane C, Janes M, Boulanger J, Martins N, Rabson B. Patient Engagement Activities and Patient Experience: Are Patients With a History of Depression the Canary in the Coal Mine?. *Medical Care Research and Review*. 2021 Jun;78(3):251-9.
140. Ganguli, I, McGlave, C and **Rosenthal, MB**, 2021. National Trends and Outcomes Associated With Presence and Type of Usual Clinician Among Older Adults With Multimorbidity. *JAMA Network Open*, 4(11), pp.e2134798-e2134798.
141. Ganguli, I, Thakore, N, **Rosenthal, MB** and Korenstein, D, 2022. Longitudinal Content Analysis of the Characteristics and Expected Impact of Low-Value Services Identified in US Choosing Wisely Recommendations. *JAMA Internal Medicine*.
142. Curto, V, Sinaiko, AD and **Rosenthal, MB**, 2022. Price Effects of Vertical Integration And Joint Contracting Between Physicians And Hospitals In Massachusetts: Study examines the price effects of vertical integration and joint contracting between physicians and hospitals. *Health Affairs*, 41(5), pp.741-750.
143. Agénor, M. Unger, ES, McConnell, MA, Brown, C. **Rosenthal, MB**, Haneuse, S, Austin, SB. 2023. Affordable Care Act State Medicaid Expansion and Human Papillomavirus Vaccination Among Adolescent and Young Adult US Women: A National Study. *Health Services Research*.
144. Ganguli, I, Orav, EJ, Hailu, R, Lii, J., **Rosenthal, MB**, Ritchie, CS, Mehrotra, A. 2023. Patient Characteristics Associated with Being Offered or Choosing Telephone vs Video Virtual Visits Among Medicare Beneficiaries. *JAMA Network Open*, 6(3), e235242-e235242.

145. Zhu, J, Kamel, H, Gupta, A, Mushlin, AI, Menzies, NA, Gaziano, TA, **Rosenthal, MB**, Pandya, A, 2023. Prioritizing Quality Measures in Acute Stroke Care: A Cost-Effectiveness Analysis. *Annals of Internal Medicine*.
146. Sinaiko, A, Curto, V, Soto, M, Ianni, K, Bambury, E, **Rosenthal, MB**. Variation in Tiered Network Health Plan Penetration and Local Provider Market Characteristics, 2023. *Health Services Research*.
147. Shields, M.C., Hollander, M.A., Busch, A.B., Kantawala, Z. and **Rosenthal, MB**, 2023. Patient-centered inpatient psychiatry is associated with outcomes, ownership, and national quality measures. *Health Affairs Scholar*, 1(1).
148. Pandey, A, Eastman, D, Hsu, H, Kerrissey, MJ, **Rosenthal, MB** and Chien, AT, 2023. Value-Based Purchasing Design And Effect: A Systematic Review And Analysis: A systematic review of value-based purchasing programs, financial and nonfinancial features, and quality and spending outcomes. *Health Affairs*, 42(6), pp.813-821.
149. Sinaiko AD, Curto VE, Ianni K, Soto M, **Rosenthal MB**. Utilization, Steering, and Spending in Vertical Relationships Between Physicians and Health Systems. *JAMA Health Forum*. 2023;4(9):e232875.
150. Elani HW, Figueroa JF, Kawachi I, **Rosenthal MB**. Early changes in health coverage and access to dental care associated with Medicaid expansion under the COVID-19 pandemic, *Health Affairs Scholar*, Volume 1, Issue 2, August 2023.

Essays and Commentary

1. **Rosenthal MB**. Provider reimbursement in the twenty-first century. *Oncology Economics*. 2000 May; 1(5): 45-7.
2. **Rosenthal MB**. Comment: The economics of direct-to-consumer advertising of prescription-only drugs: Prescribed to improve consumer welfare? *Journal of Health Services Research and Policy*. 2004 Jan;9(1):39-42.
3. **Rosenthal, MB** How will paying for performance affect patient care? *Virtual Mentor*. 2006 Mar;8(3):162-165.
4. **Rosenthal MB**. P4P: Rumors of its demise may be exaggerated. *American Journal of Managed Care*. 2007 May;13(5):238-9.
5. **Rosenthal MB** and Dudley RA. Pay-for-performance: Will the latest payment trend improve care? *Journal of the American Medical Association*. 2007 Feb;297(7):740-43.
6. **Rosenthal MB**. Nonpayment for performance? Medicare's new reimbursement rule. *New England Journal of Medicine*. 2007 Oct;357(16):1573-5.
7. **Rosenthal MB** Avoiding disincentives to treat in designing pay-for-performance measures. *Virtual Mentor*. 2007 Jul;9(7):483-486.
8. **Rosenthal MB**. Beyond pay for performance--Emerging models of provider-payment reform. *New England Journal of Medicine*. 2008 Sept;359(12):1197-1200.
9. Lee TH, Mongan JJ, Oberlander J, **Rosenthal MB**. Perspective Roundtable: Health care and the recession. *New England Journal of Medicine*. 2009 Jan; 360(4):e5.

10. **Rosenthal MB.** What works in market-oriented health policy? *New England Journal of Medicine*. 2009 May;360(21):2157-60.
11. Gawande AA, Fisher ES, Gruber J, **Rosenthal MB.** Perspective roundtable. The cost of health care — highlights from a discussion about economics and reform. *New England Journal of Medicine*. 2009 Oct 8;361(15):1421-1423.
12. De Brantes F, **Rosenthal MB,** Painter M. Building a bridge from fragmentation to accountability — the Prometheus Payment model. *New England Journal of Medicine*. 2009 Sept 10;361(11):1033-6.
13. Campbell EG, **Rosenthal MB.** Reform of continuing medical education: investments in physician human capital. *Journal of the American Medical Association*. 2009 Oct 28;302(16):1807-8.
14. **Rosenthal MB,** Beckman HB, Dauser Forrest D, Huang ES, Landon BE, Lewis S. Will the patient-centered medical home improve efficiency and reduce costs of care? A measurement and research agenda. *Medical Care Research and Review*. 2010; 67(4):476-84.
15. Sinaiko A, **Rosenthal MB.** Patients' role in accountable care organizations. *New England Journal of Medicine*. 2010 Dec;363(27):2583-5.
16. Sinaiko A, **Rosenthal MB.** Increased price transparency in health care — challenges and potential effects. *New England Journal of Medicine*. 2011 Mar;364(10):891-4.
17. Lewis KH, and **MB Rosenthal.** Individual responsibility or a policy solution — Cap and trade for the US diet? *New England Journal of Medicine*. 2011 Oct;365(17):1561-1563.
18. **Rosenthal MB.** Hard choices — Alternatives for reining in Medicare and Medicaid spending. *New England Journal of Medicine*. 2011 May;364(20):1887-1890.
19. **Rosenthal MB,** Cutler DM, and Feder J. The ACO rules — Striking the balance between participation and transformative potential. *New England Journal of Medicine*. 2011;364(20):1887-90.
20. Chien AT, **Rosenthal MB.** Waste not, want not: Promoting efficient use of health care resources. *Annals of Internal Medicine*. 2013 Jan; 158(1):67-68.
21. **Rosenthal MB,** Mello MM. Sunlight as disinfectant — new rules on disclosure of industry payments to physicians. *New England Journal of Medicine*. 2013 May; 368(22):2052-4.
22. **Rosenthal MB,** Farley T, Gortmaker S, Sunstein CR. NEJM Perspective Roundtable: Health promotion and the State. *New England Journal of Medicine*. 2013; 368(25):e34.
23. Wharam JF, Ross-Degnan D, **Rosenthal MB.** The ACA and high-deductible insurance — strategies for sharpening a blunt instrument. *New England Journal of Medicine*. 2013 Oct;369(16): 1481-4.
24. Sinaiko AD, Chien AT, **Rosenthal MB.** The role of states in improving price transparency in health care. *JAMA Internal Medicine*. 2015 Jun;175(6): 886-7.
25. **Rosenthal MB.** Physician payment after the SGR — the new meritocracy. *New England Journal of Medicine*. 2015 Sept;373(13): 1187-9.

26. Conti RM, **Rosenthal MB**. Pharmaceutical policy reform: Balancing affordability with incentives for innovation. *New England Journal of Medicine*. 2016 Feb;374(8): 703-6.
27. Ortiz SE, Rosenthal MB. 2019. Medical Marketing, Trust, and the Patient-Physician Relationship. *JAMA*, 321(1), pp.40-41.
28. Ubel, PA, **Rosenthal, MB**. 2019. Beyond Nudges—When Improving Health Calls for Greater Assertiveness. *New England Journal of Medicine*, 380(4), pp.309-311.
29. **Rosenthal MB**. The Growing Problem of Out-of-Pocket Costs and Affordability in Employer-Sponsored Insurance. *JAMA*. 2021 Jul 27;326(4):305-6.
30. Thirukumaran CP, **Rosenthal MB**. The Triple Aim for Payment Reform in Joint Replacement Surgery: Quality, Spending, and Disparity Reduction. *JAMA*. 2021 Aug 10;326(6):477-8.
31. **Rosenthal, MB**, Alidina, S, Ding, H and Kumar, A, 2023. What Can We Learn From Medicaid About Making ACOs Equitable?. *Health Affairs Forefront*.
32. Wharam JF, **Rosenthal MB**. The Increasing Adoption of Out-of-Pocket Cost Caps: Benefits, Unintended Consequences, and Policy Opportunities. *JAMA*. Published online July 27, 2023.
33. **Rosenthal, M.B.**, 2023. Novel Alzheimer Disease Treatments and Reconsideration of US Pharmaceutical Reimbursement Policy. *JAMA*.

Book Chapters

1. **Rosenthal MB**, Berndt ER, Donohue JM, Epstein AM, Frank RG. Demand Effects of Recent Changes in Prescription Drug Promotion. In Forum for Health Economics and Policy, Frontiers in Health Policy Research, v. 6, David M. Cutler and Alan M. Garber, eds, MIT Press, 2003 June.
2. **Rosenthal MB**, Donohue JM. Direct-to-Consumer Advertising of Prescription Drugs: A Policy Dilemma. In Ethics, Public Policy, and the Pharmaceutical Industry in the 21st Century, ed. M. Santoro, Cambridge University Press, 2006.
3. **Rosenthal MB**. Can Federal Provider Payment Reform Produce Better, More Affordable Healthcare? In The Future of Healthcare Reform in the United States, eds. A. Malani, M. Schill, University of Chicago Press, 2015.

Meredith Rosenthal
Testimony (2018-November 2023)

In re Aggrenox Antitrust Litigation, Case No: 3:14-md-2516-SRU, United States District Court for the District of Connecticut.

In re Asacol Antitrust Litigation, United States District Court for the District of Massachusetts, C.A. No. 1:15-cv-12730 (DJC).

In re EpiPen (Epinephrine Injection, USP) Marketing, Sales Practices & Antitrust Litigation, United States District Court for the District of Kansas, Case No. 2:17-md-02785-DDC-TJJ (MDL No. 2785).

Adrian Holley, et al. v. Gilead Sciences, Inc., United States District Court for the Northern District of California, No 3:18-cv-06972-JST.

In Re Insulin Pricing Litigation, United States District Court for the District of New Jersey, Civil Action No. 3:17-cv-00699(BRM)(LHG)

In re Intuniv Antitrust Litigation, United States District Court for the District of Massachusetts, Lead Case: 1:16-cv-12396-ADB.

In re Loestrin 24 Fe Antitrust Litigation, (all actions), United States District Court for the District of Rhode Island, MDL No. 2472, C.A. No. 1:13-md-2472-S-PAS.

In Re National Prescription Opiate Litigation, United States District Court for the Northern District of Ohio, Eastern Division, MDL No. 2804, Case No. 17-md-2804.

In re Niaspan Antitrust Litigation, United States District Court for the Eastern District of Pennsylvania, MDL No. 2:13-md-2460.

In re Opana ER Antitrust Litigation, United States District Court for the Northern District of Illinois, Eastern Division, MDL No. 2580.

In re Ranbaxy Generic Drug Application Antitrust Litigation, United States District Court for the District of Massachusetts, MDL No. 19-md-2878-NMG.

In re Solodyn (Minocycline Hydrochloride) Antitrust Litigation, United States District Court for the District of Massachusetts, MDL No. 2503 1:14-MD-2503-DJC.

In re Zetia (ezetimibe) Antitrust Litigation, United States District Court for the Eastern District of Virginia, Case No. 18-md-2836.

State of New Hampshire v. Johnson & Johnson; Janssen Pharmaceuticals, Inc.; Ortho-McNeil-Janssen Pharmaceuticals Inc., et al., Merrimack Superior Court, Docket No. 217-2018-CV-00678.

UFCW & Employers Benefit Trust vs. Sutter Health et al and People of the State of California ex rel Xavier Becerra vs. Sutter Health, Superior Court of the State of California for the City and County of San Francisco, Case No. CGC 14-538451 consolidated with CGC-18-565398.

United States of America and the State of North Carolina v. The Charlotte Mecklenburg Hospital Authority, United States District Court for the Western District of North Carolina, Charlotte Division, Case No 3:26-cv-00311-RJC-DCK.

United States of America ex rel. Yoash Gohil v. Sanofi-Aventis U.S. Inc., et al., United States District Court for the Eastern District of Pennsylvania, No. 2-c-2964.

United States of America, et. al., ex rel. Michael Bawduniak, and Fernando Villegas v. Biogen Idec Inc., United States District Court for the District of Massachusetts, Nos. 12-10601-IT and 14-10420-IT.

In re: Avandia Marketing, Sales Practices and Products Liability Litigation, United States District Court for the Eastern District of Pennsylvania, MDL No. 1871, Case No. 07-MD-1871.

Government Employees Health Association v. Actelion Pharmaceuticals LTD., et. al., United States District Court for the District of Maryland, Case No. 18-cv-3560-GLR

ATTACHMENT B

ATTACHMENT B: Materials Relied Upon

Legal Documents

Settlement Agreement Among Third Party Payors and McKinsey Defendants, *IN RE: McKinsey & CO., INC. National Prescription Opiate Consultant Litigation*, United States District Court, Northern District of California (Case No. 21-md-02996-CRB (SK))

Other Documents

Alpert, A., W.N. Evans, E.M.J. Lieber, and D. Powell, “Origins of The Opioid Crisis and Its Enduring Impacts,” *Quarterly Journal of Economics*, 2022, 137(2), pp.1139–79.

Arteaga C. and V. Barone, “A Manufactured Tragedy: The Origins and Deep Ripples of The Opioid Epidemic,” working paper, October 2023.

Davenport S., et al., “Costs and Comorbidities of Opioid Use Disorder,” Milliman White Paper, 2019.

Dennett J.M. and G.S. Gonsalves. “Early OxyContin Marketing Linked to Long-Term Spread of Infectious Diseases Associated with Injection Drug Use,” *Health Affairs*, 42(8), 2023, pp. 1081-1090.

A.G. White, et al., “Direct Costs of Opioid Abuse in an Insured Population in the United States,” *Journal of Managed Care & Specialty Pharmacy*, October 26, 2020, 26(10), pp. 1188-1198.

Electronic Data

Centers for Disease Control and Prevention (CDC), morphine milligram equivalents conversion.

Drug Enforcement Agency, Automatic of Reports and Consolidated Orders System (ARCOS)

Kaiser Family Foundation, State Health Facts (KFF)

EXPERT REPORT OF PROFESSOR MEREDITH ROSENTHAL
ATTACHMENT C: TECHNICAL APPENDIX

I. METHODS

1. The contents of this technical appendix detail the econometric model used to estimate annual multipliers reported in Table 1 of my report.

A. Econometric Model

2. My econometric model uses a panel data regression to estimate the impact of differing state-level TPP exposure to opioid marketing. As described in my report, I rely on Dennett and Gonsalves (2023) to categorize states into three levels of opioid marketing exposure (low, medium, and high), which the authors show are strongly associated with wholesale opioid shipments over the long run.¹

3. Formally, the model I estimate is as follows:

$$MMEs_{st} = \beta_0 + \beta_1 HighExposure + \beta_2 MediumExposure + \beta_3 Exposure_t \times t + \gamma_t + \beta_i X_i + \epsilon_{st}$$

where:

MMEs are the per capita number of MMEs shipped to state *s* in year *t*.

HighExposure is a time-invariant indicator for states that were exposed to a high level of opioid marketing.

MediumExposure is a time-invariant indicator for states that were exposed to a medium level of opioid marketing.

Exposure × *t* is a set of interactions between years and state exposure level.

γ denotes year fixed effects.

X is a vector of *i* demographic characteristics for each state and year.

4. All regression estimates are population-weighted, and I cluster standard errors at the state level. Table A1 shows the regression results. The data used in the model are detailed in section IV.B of my report.

¹ J.M. Dennett and G.S. Gonsalves, “Early OxyContin Marketing Linked to Long-Term Spread of Infectious Diseases Associated with Injection Drug Use,” *Health Affairs*, 42(8), 2023, pp. 1081-1090.

Table A1 – Regression Results

	Regression Coefficient	Clustered S.E.
<i>Exposure Level</i>		
Medium	41.65	(88.99)
High	199.63	(121.44)
<i>Year</i>		
2010	6.86	(40.06)
2011	35.09	(58.52)
2012	54.01	(60.12)
2013	40.28	(64.23)
2014	52.49	(74.65)
2015	73.78	(86.38)
2016	77.62	(100.37)
2017	55.26	(113.37)
2018	26.60	(125.42)
2019	28.12	(138.8)
<i>Interactions</i>		
M x 2010	51.74*	(30.15)
M x 2011	75.44**	(34.26)
M x 2012	102.19**	(42.3)
M x 2013	110.59**	(45.05)
M x 2014	118.81**	(50.05)
M x 2015	104.08*	(58.36)
M x 2016	95.93	(61.72)
M x 2017	96.58	(65.21)
M x 2018	84.09	(67.01)
M x 2019	110.97	(77.17)
H x 2010	76.44***	(45.02)
H x 2011	83.83*	(92.11)
H x 2012	60.11	(112.02)
H x 2013	62.22	(120.53)
H x 2014	88.65	(121.94)
H x 2015	93.83	(116.84)
H x 2016	101.99	(114.15)
H x 2017	106.35	(118.17)
H x 2018	89.48	(129.42)
H x 2019	101.52	(17.54)
<i>Demographics</i>		
Poverty Rate	27.81	(17.54)
<i>Age</i>		
Under 18	-2081.13	(2039.27)
19 - 25	2847.91	(8185.33)
26 - 34	-4774.96	(5.06)
35 - 54	2587.69	(3.75)
55 - 65	139.42	(5.03)
<i>Race</i>		
Percent Hispanic	-10.32**	5.06
Share White, Non-Hisp.	-2.61	3.75
Share Black, Non-Hisp.	-6.09	5.03
Constant	828.33	2443.17
Observations	561	

Note: State clustered Standard Errors reported in parentheses. Significance at 10% (*), 5% (**), and 1% (***).

5. Table A1 shows the results of my econometric model for the years 2009 – 2019 using states with low opioid marketing as the reference group. The estimation results are consistent with Dennett and Gonsalves (2023) as well as the ARCOS shipment data presented in Figure 1 of my report. Relative to states with low marketing exposure, medium and high exposure states are correlated with higher shipments of MME per capita. The year and exposure interaction coefficients show that the inverse-U time trend of MMEs per capita holds for medium and high exposure states, with high exposure states having higher MMEs shipments at all points during the analysis period.

6. I then use the estimated coefficients for the medium and high exposure levels, the year variables, and the interactions to estimate an adjusted MMEs per capita series for each year and state. Specifically, I add the exposure, year, year-exposure interaction coefficients to the adjusted mean² 2009 MMEs per capita for low exposure states together, by exposure category. The adjusted MMEs per capita are presented in Table A2.

Table A2 - Adjusted MMEs per Capita

Year	Adjusted Low Exposure MME's per Capita	Adjusted Medium Exposure MME's per Capita	Adjusted High Exposure MME's per Capita
2009	737.7	788.3	946.3
2010	744.5	846.9	1029.6
2011	772.8	898.8	1065.2
2012	791.7	944.5	1060.4
2013	778.0	939.1	1048.8
2014	790.2	959.6	1087.4
2015	811.5	966.1	1113.9
2016	815.3	961.8	1125.9
2017	792.9	940.1	1107.9
2018	764.3	899.0	1062.3
2019	765.8	927.4	1075.9

² I calculate the adjusted mean MMEs per capita for 2009 in low exposure states by using the predict function in Stata after running the model described above and resetting the data so that all observations reflect 2009 and low exposure.

7. I then compute the ratio of adjusted MMEs per capita in medium and high exposure states as compared to low exposure states, resulting in the ratios seen in Table 1 of my report. Exposure groups and their respective states are presented in Table A3.

Table A3 – Exposure Groups

Low Exposure	Medium Exposure	High Exposure
Alaska	Connecticut	Alabama
Arizona	Indiana	Arkansas
California	Kansas	Delaware
Colorado	Louisiana	Florida
Georgia	Maryland	Iowa
Hawaii	Michigan	Kentucky
Idaho	Mississippi	Maine
Illinois	Montana	Massachusetts
Minnesota	Nebraska	Missouri
Nevada	New Hampshire	New Jersey
New Mexico	North Carolina	Ohio
New York	North Dakota	Oklahoma
South Carolina	Oregon	Pennsylvania
Texas	South Dakota	Rhode Island
Utah	Wisconsin	Tennessee
Vermont		Washington D.C.
Virginia		West Virginia
Washington		
Wyoming		